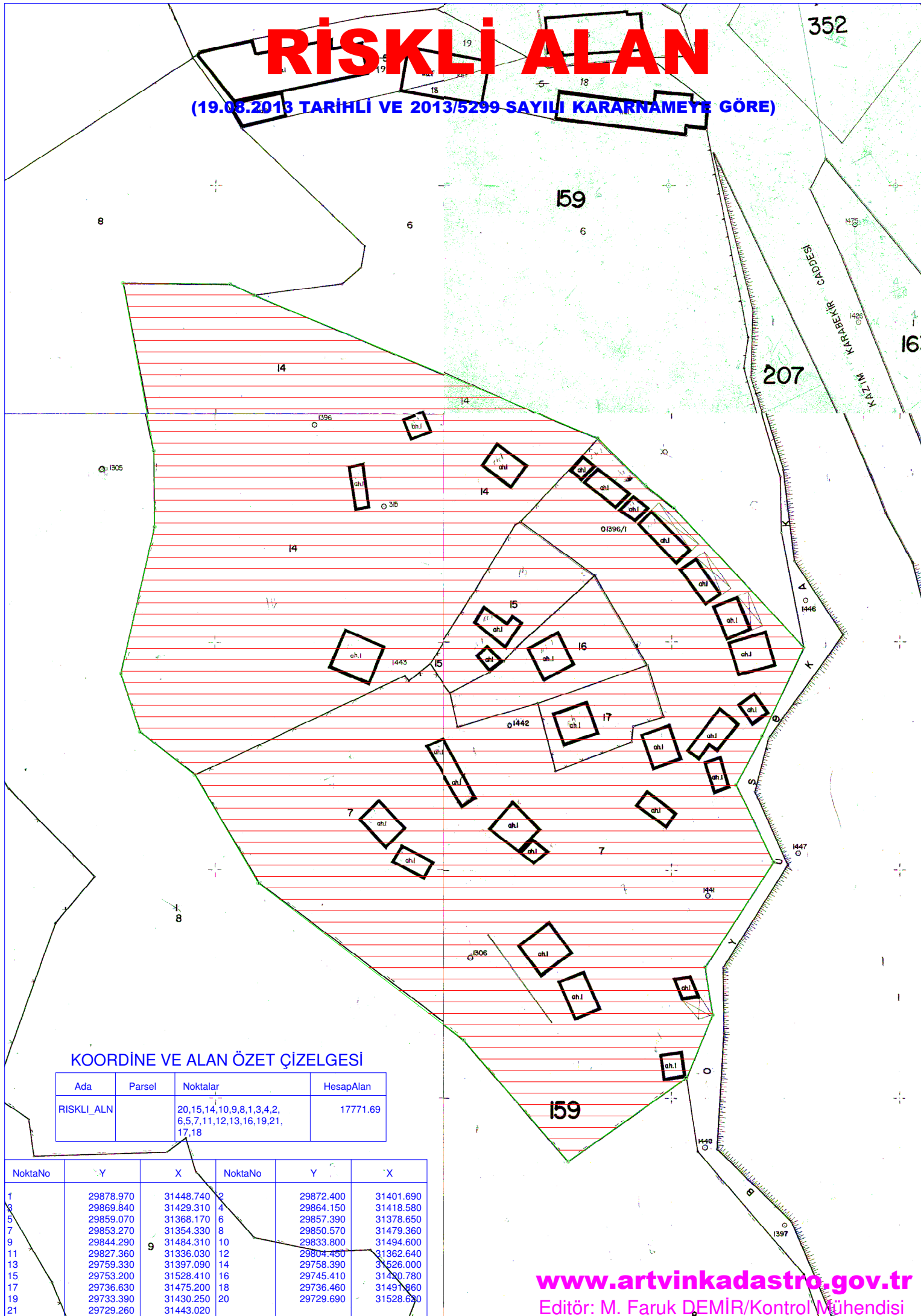


RİSKLİ ALAN

(19.08.2013 TARİHLİ VE 2013/5299 SAYILI KARARNAMEYE GÖRE)



KOORDİNE VE ALAN ÖZET ÇİZELGESİ

Ada	Parsel	Noktalar	HesapAlan
RİSKLİ_ALN		20,15,14,10,9,8,1,3,4,2, 6,5,7,11,12,13,16,19,21, 17,18	17771.69

NoktaNo	Y	X	NoktaNo	Y	X
1	29878.970	31448.740	2	29872.400	31401.690
3	29869.840	31429.310	4	29864.150	31418.580
5	29859.070	31368.170	6	29857.390	31378.650
7	29853.270	31354.330	8	29850.570	31479.360
9	29844.290	31484.310	10	29833.800	31494.600
11	29827.360	31336.030	12	29804.450	31362.640
13	29759.330	31397.090	14	29758.390	31526.000
15	29753.200	31528.410	16	29745.410	31480.780
17	29736.630	31475.200	18	29736.460	31491.860
19	29733.390	31430.250	20	29729.690	31528.630
21	29729.260	31443.020			